

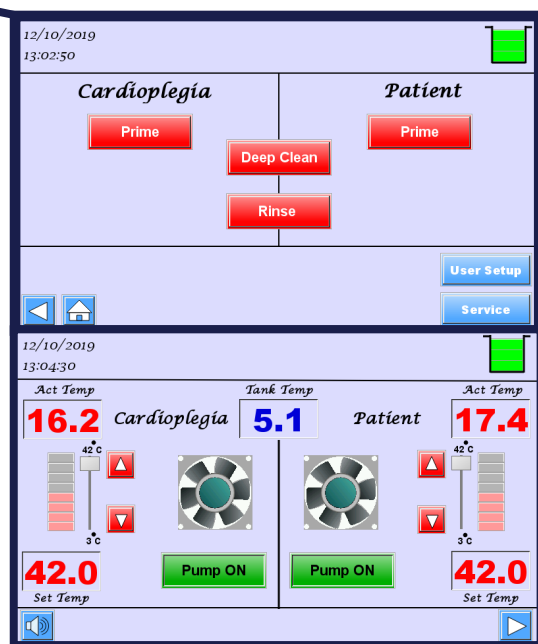
Mercury

Hyper-Hypothermia Unit

Axia
Surgical



Touchscreen Display & Controls



HEATER / COOLER

Proven Technology & Trusted Quality

CE ISO 13485:2016
3508

Axia Surgical
1.860.481.5383
166 Highland Park Drive
Bloomfield, CT 06002

axiasurgical.com
sales@axiasurgical.com



Features

- Graphical Touchscreen display & control
- 25 Liter single water tank
- 3 Circuits (Cardiopledgia, Patient & Blanket)
- Emergency manual mode
- Independent Heating and cooling (In Patient & Cardiopledgia circuit)
- In-built Diagnostic Mode for Troubleshooting.
- Faster heating in its class 3C to 42C in Approx. 5 minutes
- Faster cooling in its class 30C to 4C in Approx. 45 minutes
- Robust PLCC based electronics
- Optional Ice formation
- Self-cleaning & descaling Mode
- Water level & pump indicator
- Internal circulation available

Specifications

| |
|--|
| Power Supply: 220 VAC, 50Hz, 16A, 1Ph |
| Temperature Range: 37-107°F (3-42°C) |
| Cooling Water Tank: Single |
| Heating Chamber: Dual |
| Weight: 247 lbs (112kg) |
| Dimensions: Height: 35.1" (89.2 cm) Width: 20.7" (52.3 cm) Depth: 24.5" (62.2 cm) |

Emergency Manual Controls

